

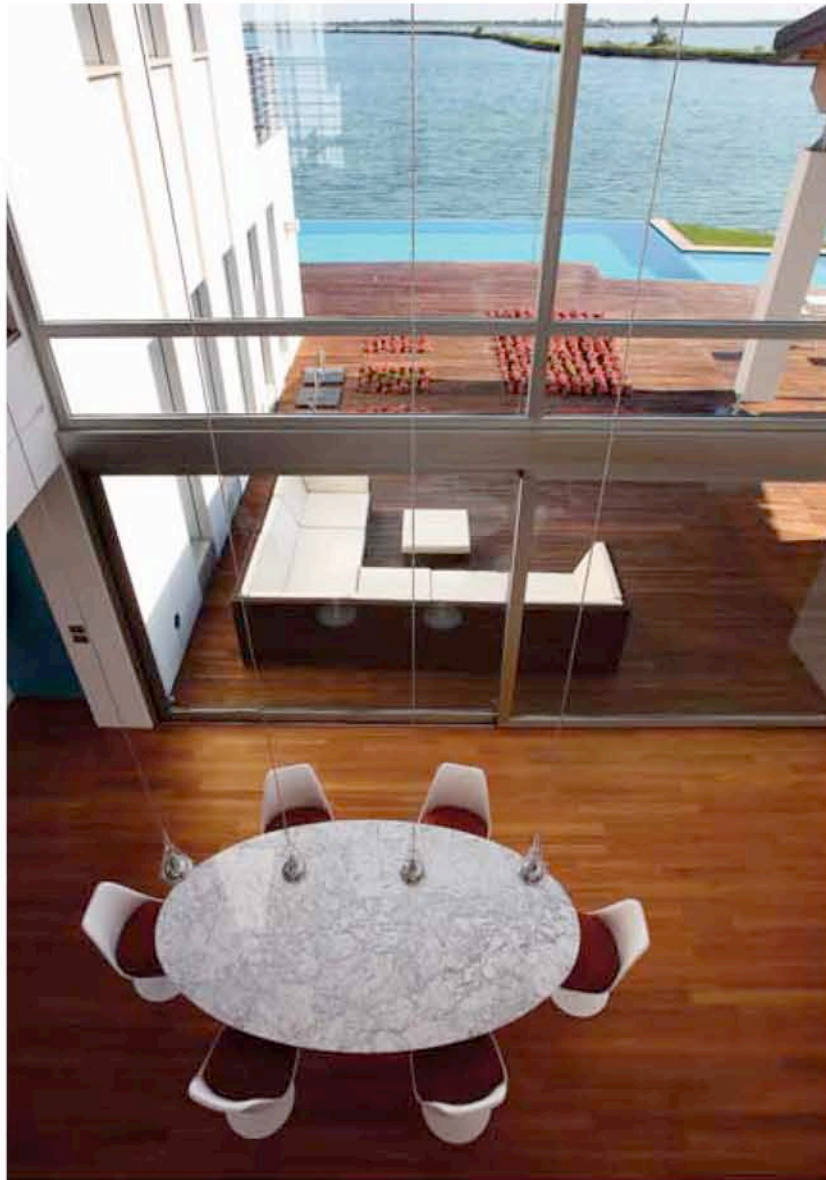
# 21<sup>st</sup> Century Beach Houses

Andrew Hall

images  
Publishing

# Albarella House

Albarella Island, Venice, Italy  
**Gabbiani & Associati**



This holiday house is on Albarella Island, a small privately owned island south of the Venetian Lagoon, between Venice and Ravenna. The island, connected to the mainland by a private causeway, comprises hotels, private villas, a sports center, and beach and golf clubs.

Taking advantage of the double waterfront site, the house is split into three interconnected volumes. Seamless integration between indoors and outdoors is achieved through wide glass walls, and continuity of flooring and finishing materials. Each of the three volumes connects with its surrounds through a different approach, depending on its orientation, the type of landscape it overlooks, and its function.

The western volume, which connects with the nature reserve, houses the living quarters on a single floor composed almost entirely of glass walls. The double-height entrance volume acts as a type of hinge between the other two. The two-story eastern volume, the furthest from the water, contains the sleeping quarters and bathrooms. The curved roof forms integrate gracefully into the landscape, recalling the shape of the sand dunes on the Adriatic coast.

Photography by Arnaldo Dal Bosco and Gabbiani & Associati



